

HARVEST™ INTERNATIONAL INC

A FRIESEN COMPANY

A TOOLBAR DESIGNED FOR MAXIMUM VERSATILITY
IN STRIP TILLAGE & OTHER DEMANDING APPLICATIONS
BUILT FOR TODAY - ENGINEERED FOR THE FUTURE

ULTRAMAX™ STRIPTILL BAR

AVAILABLE IN SERIES 1 & SERIES 2
PATENT PENDING



Designed for Productivity



Manufactured in the USA

PHOTO CREDIT



Innovative Engineering

ULTRAMAX™ STRIPTILL TOOLBAR

PATENT PENDING

PRECISION ENGINEERING
FULLY INTEGRATED LASER TECHNOLOGY

TRI-FLEX WING FOLD DESIGN
FLEXIBLE SPAN, NARROW TRANSPORT

POWDERGUARD PLUS™
BETTER COATING & LONGER LASTING

Front Manifold
FOR TONGUE, TRANSLOCK, & MARKER FUNCTIONS

External Steel Hydraulic Tubes
EASY SERVICE & INCREASE OIL COOLING

Get&Grab™ Latch System
GRABS & LOCKS WING ARMS TO ENSURE CLOSURE

Adjustable Draft Tubes

Optional Tri-Fold Row Markers
INCLUDES SHEAR BOLT FOR MARKER SAFETY

9" x 5" Wing Draft Tubes
PROVIDES CLEAN MOUNTING SPACE

Optional Rear Drawbar

Wing Joint Flex Points
APPROX. 12° FLEX UP & DOWN

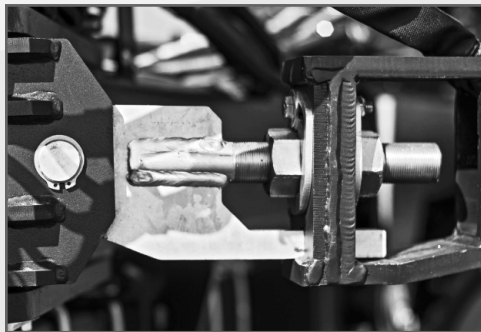
MuckMaster Tires on Center
EXTRA-WIDE FOOTPRINT (380 55R 22.5)
STANDARD ON 40' FR MODELS & UP

7"x7" Mounting Bar
BOLT-ON ROW UNITS & WHEEL MOUNTS

PowderGuard Plus™
SUPERIOR POWDERCOAT COVERAGE & DURABILITY

SPECIFICATIONS

MODEL	NUMBER of ROWS	ROW SPACING	NUMBER of TIRES	FOLD / FLEX	OPEN WIDTH ^(A) // FOLDED WIDTH ^(B)	OPEN LENGTH ^(C) // FOLDED LENGTH ^(D)	HITCH STYLE	TIRE POSITION
ST3030FR	12	30"	1-4-1	3-6-3	30' 10" // 164 1/4"	15' 2" // 23' 10"	BULL-PULL HAMMER STRAP	FRONT RUNNING
ST4030FR ^(S2)	16	30"	2-4-2	5-6-5	41' // 164 1/4"	18' 11" // 27' 6"	BULL-PULL HAMMER STRAP	FRONT RUNNING
ST4422FR ^(S2)	24	22"	2-4-2	8-8-8	43' 6" // 164 1/4"	19' 11" // 29' 6"	BULL-PULL HAMMER STRAP	FRONT RUNNING
ST6030FR ^(S2)	24	30"	2-4-2	9-6-9	59' 10" // 164 1/4"	24' 7" // 39' 6"	BULL-PULL HAMMER STRAP	FRONT RUNNING
ST6020FR ^(S2)	36	20"	2-4-2	9-6-9	59' 10" // 164 1/4"	24' 7" // 39' 6"	BULL-PULL HAMMER STRAP	FRONT RUNNING



REINFORCED DRAFT TUBE ADJUSTMENTS W/ NUT KEEPER



ST60 ULTRAMAX 24 ROW PULLING PLURIBUS STRIPTILL ROW UNITS



TOOLBAR FUNCTION CONTROL CONSOLE; CAN BUSS OPERATED

H HARVEST INTERNATIONAL INC

401 W 20TH STREET • STORM LAKE, IA 50588
TEL: 712.213.5100 • TOLL: 888.218.5373 • 712.213.5109
WWW.HARVEST-INTERNATIONAL.COM

MADE IN THE USA

