

Pivot Bushing Service Tool Instructions — 756146

This tool allows for proper removal and installation of the 756039 sleeve bearings in the FurrowForce swingarm casting.

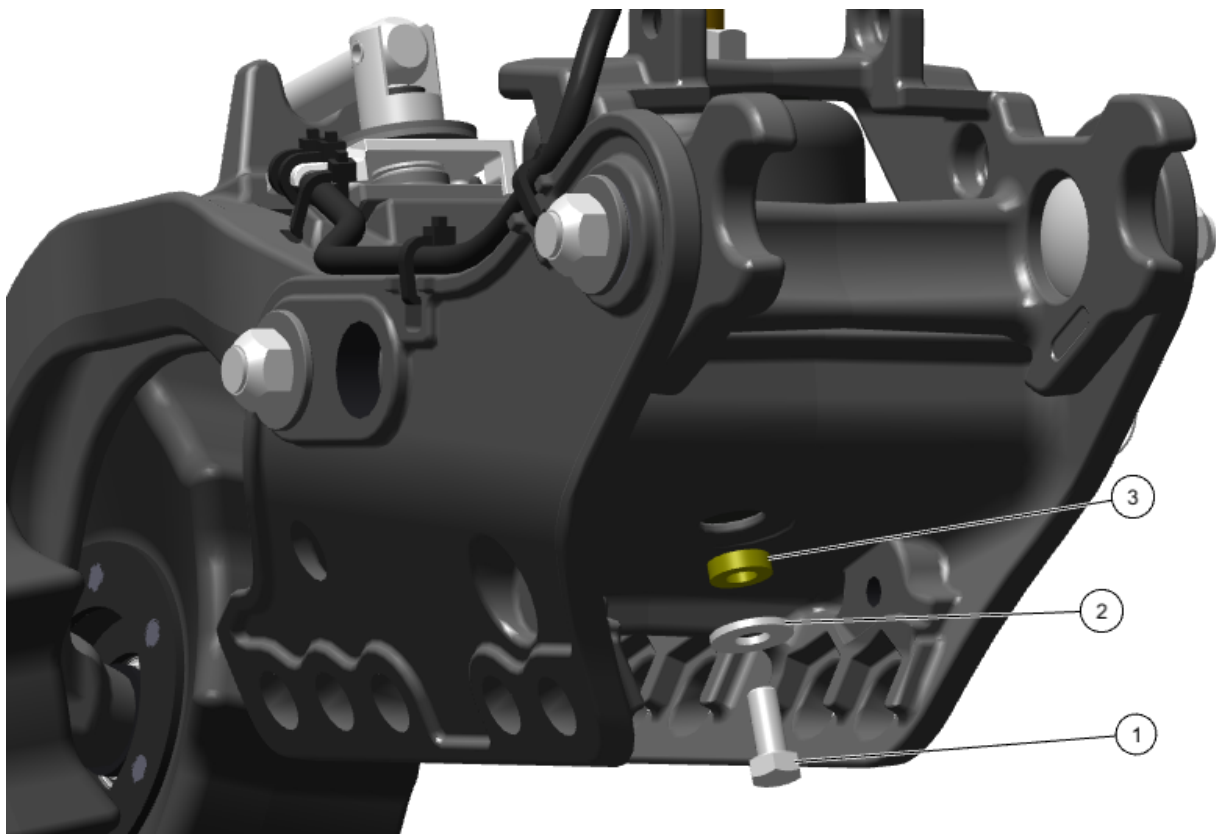
Note: Removal of the first stage wheels and rock guard (if installed) are not required, but will make the process easier.

Step 1:

Remove the FurrowForce assembly from the row unit bracket.

Step 2:

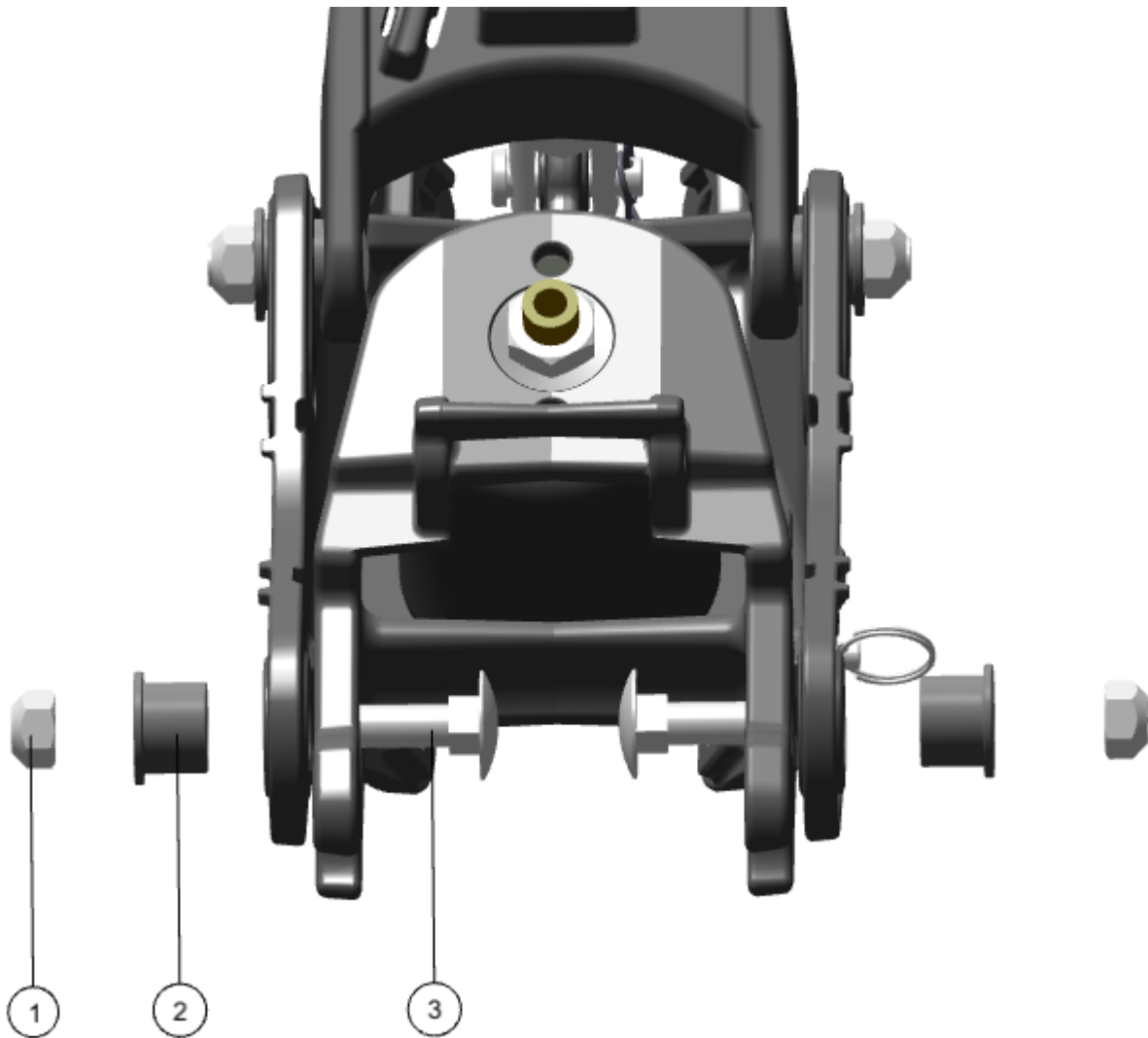
Remove the bolt (1), 5/16 washer (2), and spacer (3) from the bottom of the swingarm casting. This will free the airbag.



Note: If a FurrowForce sensor is installed, remove the two zip ties that secure the sensor harness to the top, rigid frame.

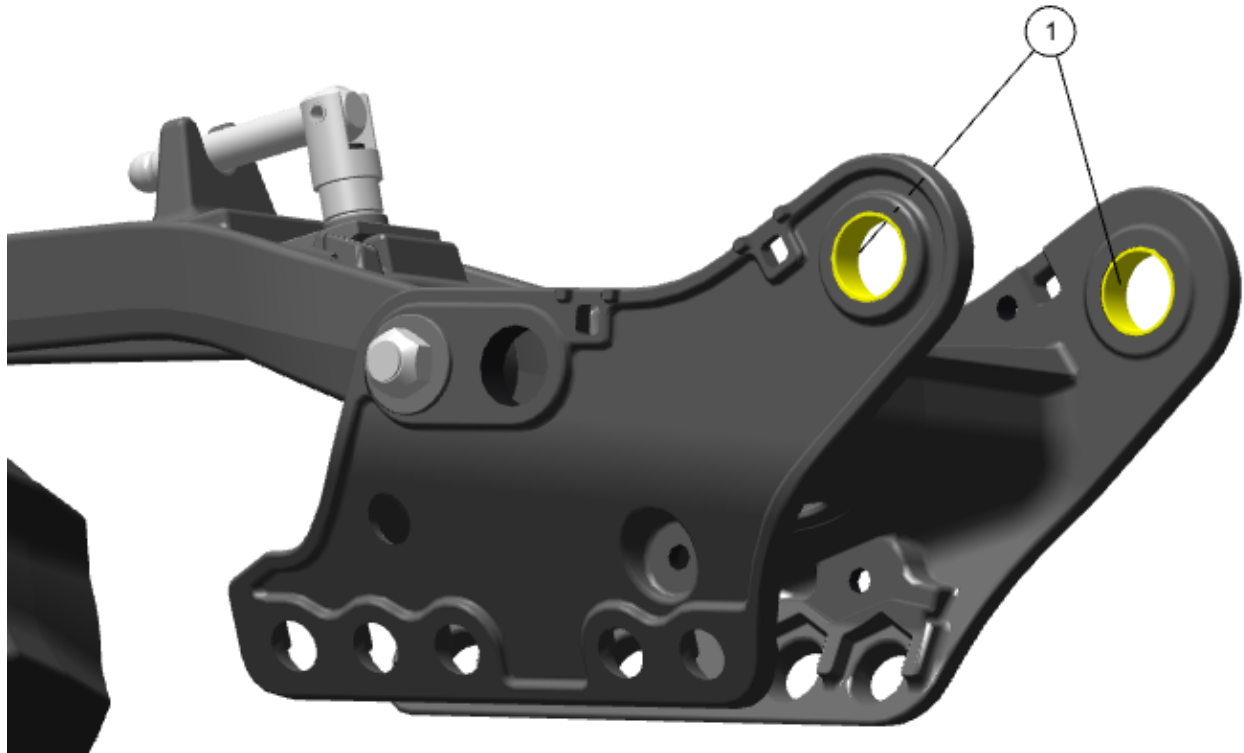
Step 3:

Remove the M12 top lock nut (1), pivot bushing (2), and M12-1.75 x 40 carriage bolt (3) from each side of the assembly as shown.



Step 4:

Remove the top, rigid frame and airbag. This will allow access to the sleeve bearings (1) in the swingarm.



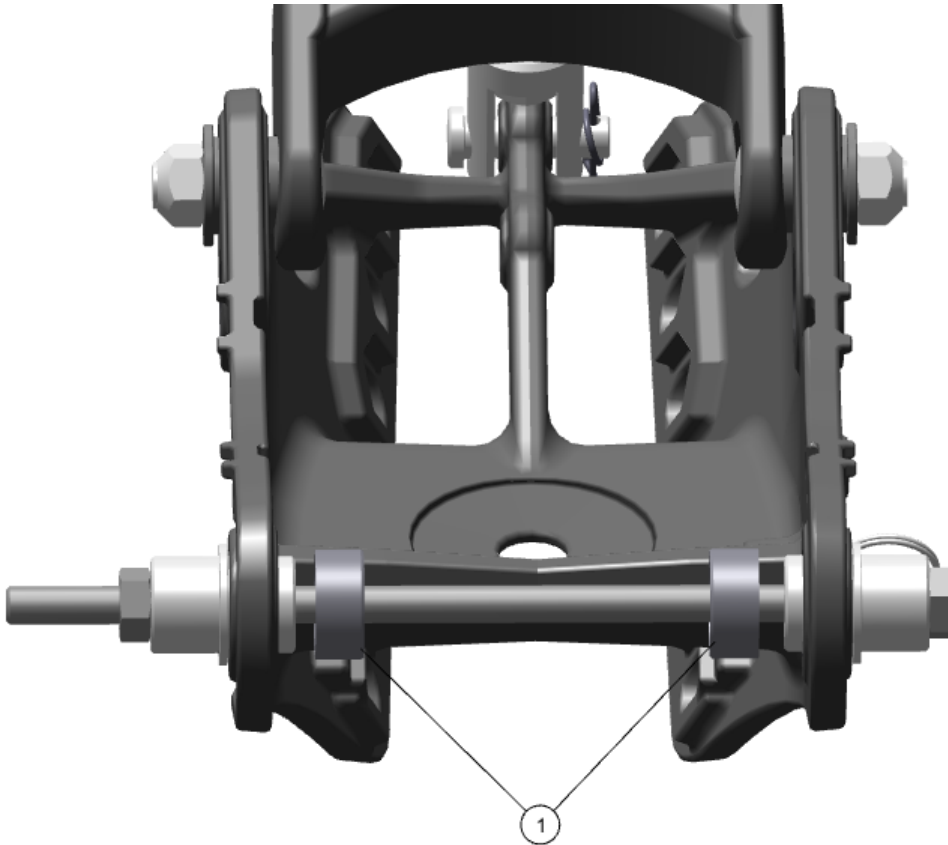
Step 5:

Locate the 756146 Pivot Bushing Service Tool and remove the nut (1) and one of the bushing service tool pieces (2). Orient the other bushing service tool piece with the single diameter side against the bolt head, as shown.



Step 6:

Slide the bolt through the swingarm pivots. Place the bushing service tool piece on the bolt with the single diameter side facing out, away from the swingarm. Install the nut and tighten until the sleeve bearings (1) are pressed out of the swingarm.



Step 7:

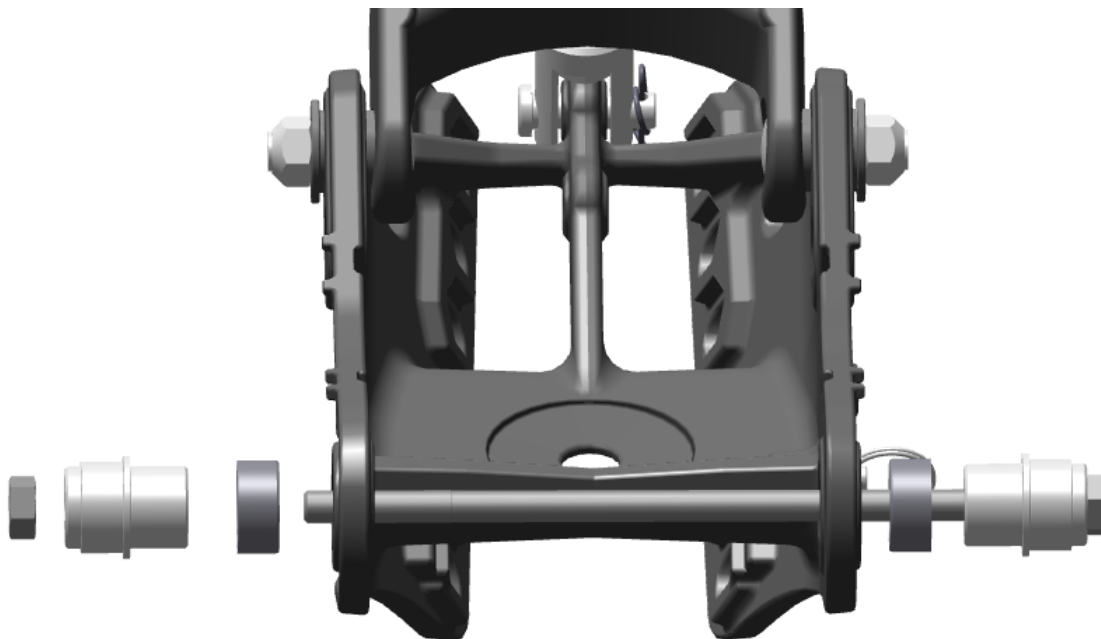
Remove the pivot bushing service tool from the swingarm.

Note: The new sleeve bearing must be installed with the chamfered edge facing the inside of the swingarm.



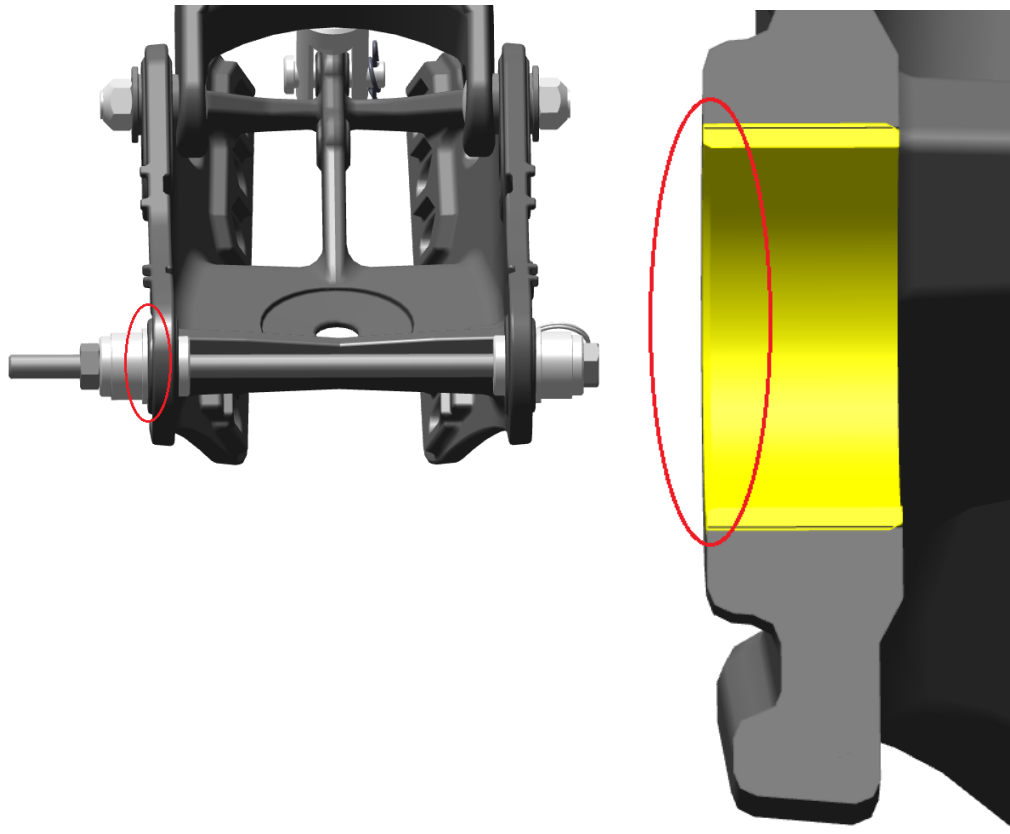
Step 8:

Orient one of the pivot bushing service tool pieces so the stepped diameter is against the bolt head. Slide a new sleeve bearing on the bolt, oriented as described above and insert the bolt through the swingarm pivots. Install the second sleeve bearing as described above and the second pivot bushing service tool piece with the stepped diameter facing away from the swingarm as shown.



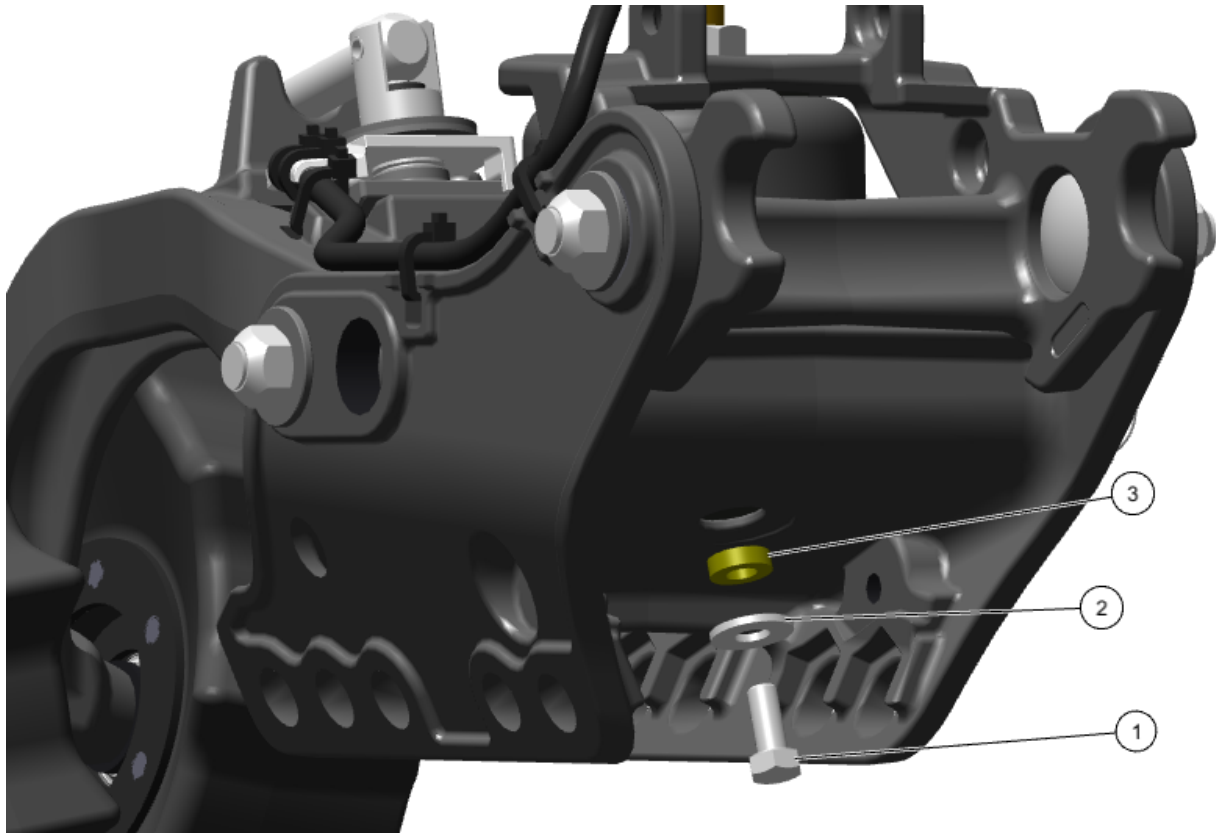
Step 9:

Install the nut and tighten until each sleeve bearing is pressed into the swingarm. **The outer edge of each sleeve bearing must be flush with the casting, as shown in the cross section.**



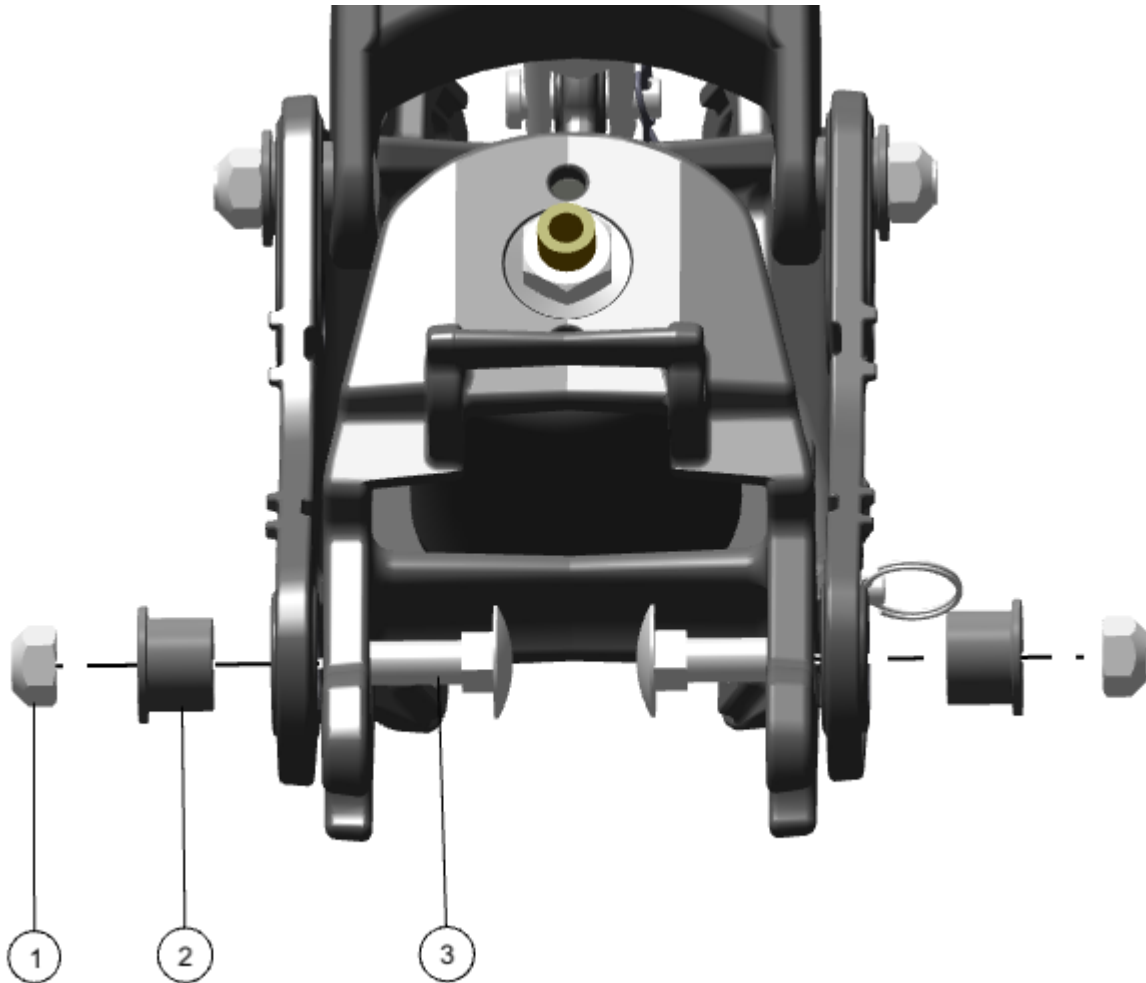
Step 10:

Re-install the top, rigid frame and airbag. Re-install the spacer (3), 5/16 washer (2), and bolt (1). Torque the bolt to 100 lb-in.



Step 11:

Re-install the M12 top lock nut (1), pivot bushing (2), and M12-1.75 x 40 carriage bolt (3) through each side of the top, rigid frame and swingarm. Torque to 65 lb-ft.



Step 12:

Re-install the FurrowForce assembly to the row unit bracket and re-intall the rock guard and first stage wheels (if removed).